



**BETTER BROADBAND
FOR OXFORDSHIRE**
Connecting homes and businesses

Bringing high-speed fibre broadband to over 96% of homes and businesses in Oxfordshire by the end of 2018



Better Broadband update - December 2018



As superfast broadband coverage nears 97% in Oxfordshire, it is notable to see how coverage has progressed since the beginning of the Better Broadband programme. The three charts below show the progress from the start when there was just 69% coverage. Another interesting fact is that our delivery partner, Openreach, originally estimated that adoption of fibre-enabled broadband would be just 20% (which was the take-up rate of commercially available services at that time). This take-up calculation was used as the basis for our contract with BT to establish the amount of public subsidy required to achieve 90% superfast coverage. In fact, the take-up rate across the 76,000 premises connected under the programme is rapidly approaching 60%, which means that under the commercial terms of our contract, this will generate a healthy income for the programme. This income will help us move towards a 'full fibre Oxfordshire.' This is where the entire connection between exchange and premises is with fibre and is known as Fibre To The Premise (FTTP) technology. It will take time, and we will need to work with government and partners to establish the strategy and commensurate funding needed to develop this ambition. The several hundred kilometres of fibre laid in provisioning the near 600 structures enabled under the current programme, will also enhance the means of this target being achieved. Further information on this important subject is described within the Future Telecomms Infrastructure Review mentioned later in this edition.

This newsletter also refers to a currently live government consultation on ensuring that all new housing developments in the country are equipped with full fibre being available to every new occupier. We consider this a very welcome proposal as it is absurd that new housing should be built and released without the necessary infrastructure available, and fibre broadband is as essential now as any other utility.

Meanwhile the Better Broadband team have issued the tender for the DEFRA-funded broadband project I referred to in the last newsletter. It is anticipated this project will connect approximately a further 1700 of the most rural and isolated premises in the county to full fibre broadband.

Finally, there is a government funded voucher scheme available for upgrading broadband to full fibre. This is detailed later within this newsletter and I would encourage communities (and small businesses in particular) to look into it. If you have questions or need any help in applying, our Broadband team will happily assist.

Cllr David Bartholomew

Cabinet Member for Finance & Lead Member for Broadband

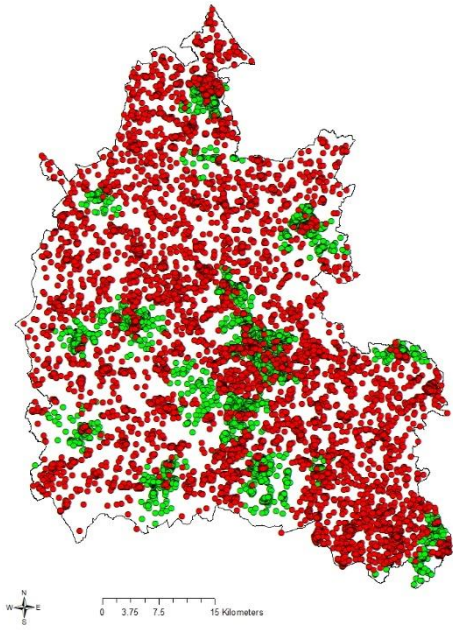
BBfO latest statistics



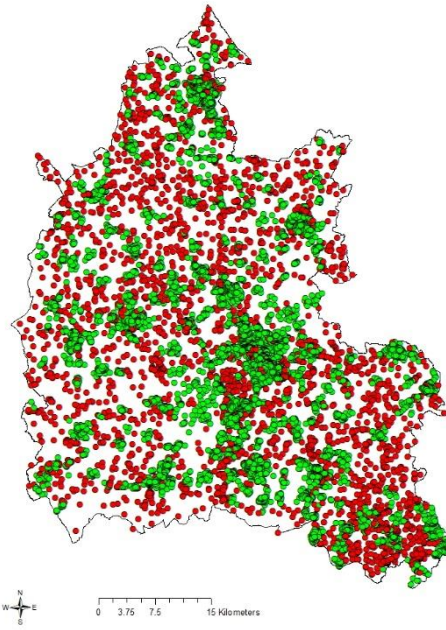
Superfast broadband coverage in Oxfordshire

As we near five years since the first superfast broadband premises were enabled to access superfast broadband under the Better Broadband for Oxfordshire programme, the maps below show the progression in availability of superfast broadband from data collected at the end of 2012 to today.

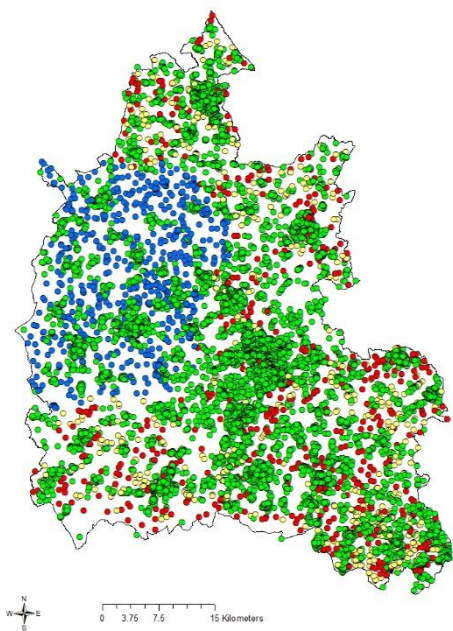
2012
69% coverage



2015
90% coverage



2018
96% coverage



Legend: Icons are at postcode level

- Fibre Enabled/Superfast
- Planned/in scope for Better Broadband Project
- West Oxfordshire Project
- Investment Required**
- OXON border

** For the 2018 map, some of these are in scope of the Defra funded superfast project and will be mapped in 2019

Claim your Gigabit Broadband Voucher!



The Department of Digital, Culture, Media and Sport has launched the Gigabit Broadband Voucher Scheme, which the Better Broadband programme at Oxfordshire County Council is facilitating for businesses and residences across Oxfordshire. The scheme will enable businesses to claim up to £2500 against the cost of connection to full fibre (FTTP) and £500 for residences. For each business, 10 residential vouchers can be combined to benefit from the scheme. Learn more about how the scheme is helping small, rural businesses and communities across the country – [success stories](#)

ARE YOU READY?

Full fibre broadband connections offer the fastest and most reliable speeds available and the government is committed to a vision of a full fibre Britain. As part of this commitment in March 2018, a £67 million Gigabit Broadband Voucher Scheme was announced. Gigabit vouchers can be used by small and medium sized businesses and the local communities surrounding them to contribute to the installation cost of a gigabit capable connection. One gigabit is the same as 1000 megabits – so it's a big leap forward in connection speeds that could benefit you and your business into the future.

Find out more about the scheme: <https://gigabitvoucher.culture.gov.uk>

Need help understanding the scheme? Contact: broadband@oxfordshire.gov.uk

Future Telecoms Infrastructure Review

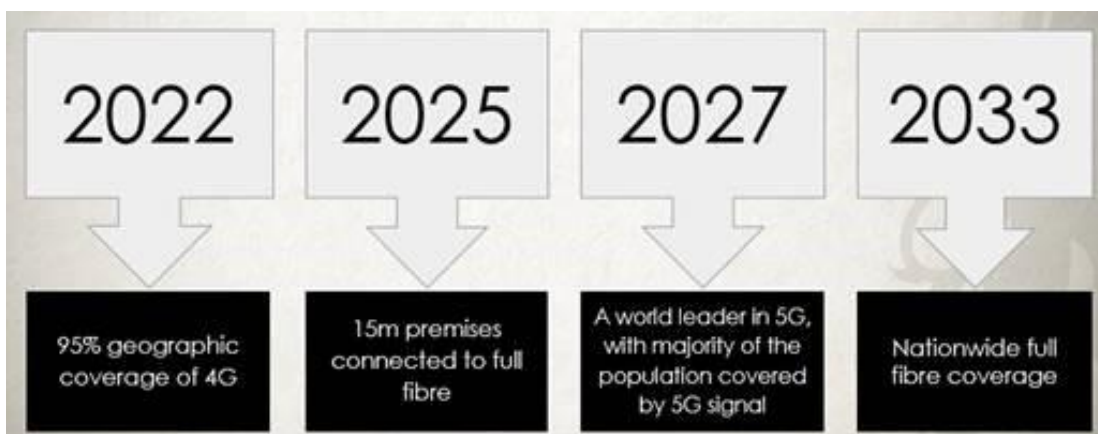


In July 2018, the Secretary of State for Digital, Culture, Media and Sport announced the new Future Telecoms Infrastructure Review, which forms part of the Government's modern Industrial Strategy. The review aims to assess and make plans to improve telecoms and internet connectivity across the country. Importantly, the review states that rural areas with bad connections will be a priority for improving broadband connectivity.

The aim is for 15 million premises to be connected to full fibre by 2025, with nationwide coverage by 2033. The government is also striving for the UK to be a world leader in the next generation of mobile technology, 5G, with deployment to the majority of the country by 2027 so that UK consumers and businesses can take early advantage of the benefits.

The Future Telecoms Infrastructure Review is intended to create the right market and policy conditions to secure world-class connectivity for all and also acknowledges that it will need to be accompanied by changes from within the sector, with the focus on growing the market and improving consumer experiences.

Overview of objectives:



Read the full publication – [Future Telecoms Infrastructure Review](#)

New builds - public consultation now open!



At the end of October, the Department for Digital, Culture, Media and Sport opened a public consultation to obtain your views to mandate that new build homes should be accessible to gigabit-capable connections (1000Mbps).

Responses requested relate to:

- Developers and network operators sharing the cost of connecting new builds
- Introducing a 'duty to connect' provision
- Amending building regulations

Public consultation will close: 21/12/18

The government are committed to providing the UK with world-class digital connectivity and the Future Telecoms Infrastructure Review, which was published back in July, outlined the need for identifying and removing barriers to deployment and also creating a legislative and regulatory environment.

Visit – [New Build Developments: Delivering gigabit-capable connections](#)

Legal right in 2020 to request 10Mbps+



The Universal Service Obligation (USO) is aimed towards the final 1-2% of premises across the UK that are still unlikely to be covered by superfast broadband (24Mbps+) in March 2020. The USO will become a *legal right* to request a 10Mbps+ capable broadband connection, but will not be an automatic service upgrade. So far, only five Internet Service Providers (Openreach, KCOM, Hyperoptic, Quickline and Broadband Partners) have expressed their interest in becoming suppliers.

Coming to a cabinet near you!



Since our last newsletter, the following nine cabinets are now accepting orders:

- Abingdon Road area, Dorchester-on-Thames
- Brightwell Baldwin Village
- Chalkhouse Green Road area, Chalkhouse Green
- Elm Road area, Toker Green
- Faringdon Road area, East Challow
- Harpsden Road area, Binfield Heath
- Hyde Road area, Denchworth
- Old Bix Road area, Bix
- Port Hill area, Nuffield

These ten cabinets in the following areas will soon be accepting orders:

- Aldous Drive area, Bloxham
- Apollo Office Park, Wroxton
- Deer's Lane, Checkendon
- Dunsden Green area, Dunsden
- Elm Road area, Toker Green
- Emmington Village
- Horsepond Road area, Cane End
- Milton Gate area, Milton
- Stoke Lyne Village
- Wykham Lane area, Banbury

Your Frequently Asked Questions (FAQs)

Q: What is meant by VDSL, ADSL, upstream and downstream line rate?

A: VDSL means 'Very-high-bitrate Digital Subscriber Line.' This is an improved version of the ADSL technology and provides faster upload and download speeds. VDSL refers to a product available from the Fibre-to-the-Cabinet (FTTC), which your landline telephone may have been upgraded to. If this is the case, then you will be able to upgrade and order a superfast, fibre broadband service – please note that the upgrade would not happen automatically. In terms of download and upload speeds, VDSL can be up to five times faster for download and ten times faster for upload speeds. If you should come across the term 'clean' with VDSL, this means that the line is in good condition and free from any wiring issues. On the other hand, 'impacted' refers to a line that could have used a wiring extension and may therefore, have wiring issues. There is also the term, 'downstream handback threshold,' which refers to your landline connection speeds. If these should be continuously below the stated Mbps figure, then we would urge you to contact your Internet Service Provider to raise this as a fault, as the line speeds would be significantly lower than the estimated range that you should expect to achieve.

ADSL means 'Asymmetric Digital Subscriber Line.' This is a form of DSL connection that uses frequencies on regular, copper telephone lines that aren't taken up by voice calls. In terms of download and upload speeds, you can receive up to 24Mbps download, however upload speeds can vary as they could be affected by the condition of the wires, distance and any noise or interference on the telephone line. There is also ADSL2+, which is a newer form of ADSL connection, which is available to those living within 2km range of a telephone exchange. There is also the term, 'downstream

range,' which refers to either the minimum / maximum connection speeds that you can expect to receive from your ADSL connection.

If you should come across upstream or downstream line rates, these refer to the speed that your line can access to send data to (upstream) or deliver data from (downstream) the internet, which is measured in megabits per second (Mbps).

[Read FAQs on BBfO website](#)

Follow progress - BBfO coverage maps

You can see the latest Better Broadband for Oxfordshire delivery plans using the coverage map, which is available on our website and updated monthly.

[Find out more](#)

[Visit Better Broadband for Oxfordshire](#)



Copyright Â© 2018 Oxfordshire County Council, All rights reserved.

[unsubscribe from this list](#) [update subscription preferences](#)